

IPX6 Waterproof Test Chamber with IEC60529 Standard IP66 Rating and 7 Inch Touch Screen Control

Our Product Introduction

for more products please visit us on raintestchambers.com

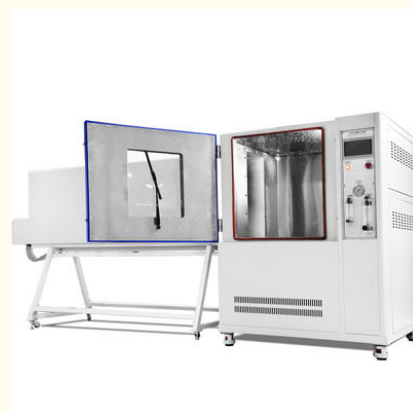
Basic Information

- Place of Origin: Guangdong, China
- Brand Name: YUEXIN
- Model Number: YX-IPX56KBSE-1000L
- Minimum Order Quantity: 1
- Price: \$33,500-38,500

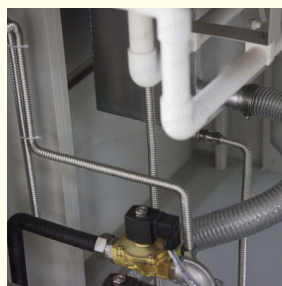
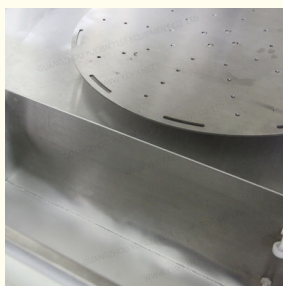


Product Specification

- Power: 2500W
- Power Supply: AC380V 50HZ
- Weight: 500kg
- Control: 7 Inch Touch Screen
- Inner Size: L1000*D1000*H1000mm
- External Dimensions: L3840*D1120*H1720mm
- Turntable Diameter: 600mm
- Nozzle Diameter: 6.3mm(IPX5/IPX6K);12.5mm(IPX6)
- Water Flow: 12.5±0.625L/min(IPX5);100.0±12.5L/min(IPX6)
- Flow Control: Automatic Adjustment (Flow Sensor)
- Water Spraying Distance: Approximately 2.7 Meters
- Turn Table Load: 50KG
- Water Spray Height: 0-800mm
- Test Time: 0-999min
- Voltage: 380V



More Images



Product Description

IEC60529 IP66 Water Spray Test Chamber Search Light IP66 Rain Test Machine

Product Overview

Key Features

Two Spray Modes

Up and down sweeping water spray and fixed water spray configurations.

Advanced Controller

7-inch touch screen with PLC, using Yuexin self-developed software that supports multiple language options.

Water Storage Tank

Integrated water storage tank with automatic water level control system that provides full/empty alerts and alarms.

Sample Power Outlet

- 220V, 10A power socket mounted on right wall
- Enables live testing of samples during water spray
- Automatic turntable rotation adjustment prevents cable winding

Technical Specifications

This equipment tests electronic/electrical products, automotive components, and other products under simulated water spray conditions to verify performance against requirements.

Model	YX-IPX56KBSE-1000L
Inner Size	L1000×D1000×H1000mm
External Dimensions	L3840×D1120×H1720mm
Turntable Diameter	600mm
Nozzle Diameter	6.3mm (IPX5/IPX6K); 12.5mm (IPX6)
Water Flow	12.5±0.625L/min (IPX5); 100.0±12.5L/min (IPX6); 75.0±3.75L/min (IPX6K)
Flow Control	Automatic adjustment (Flow sensor)
Water Spray Distance	Approximately 2.7 meters
Spray Gun Fixing	Mechanical fixation with programmable angle adjustment
Turn Table Load	50KG
Test Time	0-999min
Protection	Leakage, water shortage, short circuit protection
Voltage	380V

Power	2.0KW
Standards	IEC60529:1989+A1:2013, ISO20653, IEC60598, DIN40050

Manufacturer Information

Guangzhou Yuexin Test Equipment Co., LTD., established in 2013, covers 2350 square meters with approximately 50 employees. Specializing in IP waterproof and dustproof testing equipment with a professional R&D team for customized solutions.

Nominated supplier for BYD, DJI, CATL and other major companies

25 patents granted with ISO9001 certification

Product range includes IPX1-9K and IP5/6X test chambers

Global distribution with responsive after-sales service

Frequently Asked Questions

1. Are you manufacturer? Do you offer after-sales service? How can I ask for that?

Yes, we are professional manufacturers of waterproof and dustproof test equipment. All machines come with 12 months warranty (extendable to 14 months for overseas shipments). We provide parts replacement, repairs, and technical support during warranty period.

2. What's the delivery term?

Standard machines typically ship within 15-20 working days after deposit. Urgent orders can be accommodated with special arrangements.

3. Do you accept customization service? Can I have the LOGO on the machine?

Yes, we offer both standard and customized machines with OEM/ODM services including logo placement.

4. How can I install and use the machine?

Most machines ship fully assembled - just connect power to begin testing. We provide English operation videos and can assist with on-site installation if needed.

5. What languages are supported?

Standard equipment supports Chinese and English. Additional languages can be customized per user requirements.



Guangzhou Yuexin Test Equipment Co., Ltd.



18122303372



mft@yxipx.com



raintestchambers.com

101, No.3, Jiangjunzi Road, Dalong Street, Panyu District, Guangzhou City China