

## IPX9 500L Waterproof Test Chamber, High Performance Rain Tester for Water Jet

Our Product Introduction

for more products please visit us on [raintestchambers.com](http://raintestchambers.com)

### Basic Information

- Place of Origin: Guangdong , China
- Brand Name: YueXin
- Certification: ISO 20653:2013, DIN 40050-9:1993, IEC60529:2013 VW 80000:2017 LV124 K-10
- Model Number: YX-IPX9B-500L
- Minimum Order Quantity: 1 pcs
- Price: usd+20000-50000+pcs
- Packaging Details: wooden box package
- Delivery Time: 30-45 days
- Payment Terms: T/T
- Supply Ability: 100+pcs+30



### Product Specification

- Nozzle Type: Fan Nozzle
- Number Of Nozzles: 4
- Nozzle Angle: 0°,30°,60°,90°(Each Angle Spray For 30 Seconds)
- Turn Table Diameter: 400mm
- Turn Table Load Bearing: 30KG
- Water Flow: 14-16L/min
- Rotating Speed: 1-5 Rounds Per Minute
- Commodity Name: IPX9K Waterproof Test Equipment , IPX9K Test Machine
- Highlight: **500l waterproof test chamber, 500l ipx9k rain test chamber**



## Product Description

### IPX9 500L Waterproof Test Chamber, High Performance Rain Tester for Water Jet

#### General specifications:

Outer dimension	Approx W 1200×D 1000×H 1760 (mm)
Outer material	Steel plate
Power supply	380V/50HZ
Power	18.0kW

#### Product Introduction:

The IPX9 high-pressure spray test chamber is a device used to test the waterproof performance of products under high temperature and high pressure conditions. It simulates the high-temperature and high-pressure steam cleaning process to spray samples, thereby evaluating the reliability and durability of products in harsh environments.

The spray distance can be adjusted manually to meet the standard (125±25mm).

The outer layer of the water tank is pasted with thermal insulation cotton to reduce heat dissipation and ensure a constant water temperature.

There is a water storage tank inside the equipment and a water level control system. When the water is full, it will prompt, and when it is short of water, it will alarm.

The sample power socket (220V, 10A) is mounted on the right wall of the inner box, which is convenient for the user to do the live test of the sample; and after the sample is powered on, the turntable rotation will be automatically adjusted to forward and reverse rotation to prevent winding.

The equipment adopts high-quality high-temperature and high-pressure water pumps to make the test process more stable.

Controller: 7-inch touch screen + PLC, using Yuexin self-developed software, which can be switched to multiple language<sup>6</sup>.

Protection measures: short circuit protection, water shortage alert and door open alert<sup>7</sup>.

#### Technical data:

Item	Specification
Spray distance	125±25mm
Number of nozzles	4
Nozzle angle	0°,30°,60°,90°
Water flow	14-16L/min
Flow control	Automatic adjustment
Storage tank temperature	80±5
Spray pressure	8000-10000Kpa
Water jet impact	0.9-1.2N
Test time	120 seconds, 30 seconds per position
Power supply	380V/50HZ
Power	18.0kW

#### Remark:

1 The pictures in this document are for customer reference only, and there may be color differences between the actual model and the pictures.

2 This document only lists some test standards, which does not mean that other test requirements and standards cannot be conducted. Welcome to communicate and discuss with us.

3 One test only at the same time. The next project can be only carried out after the current test is completed. In addition, we can provide multi-functional customized test solutions according to user requirements.

4 Standard load-bearing upper limit of turntable is 30kg, but also can be customized per requirements.

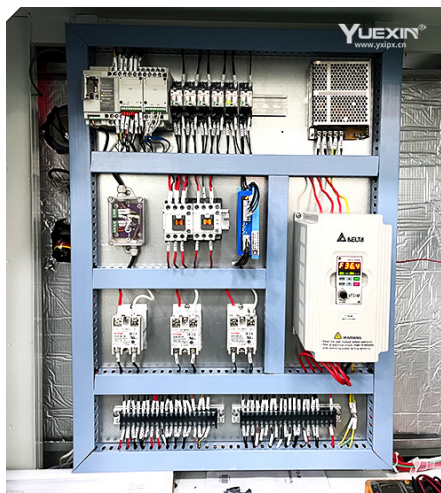
5 Please inform in advance if the voltage(220V) does not match the actual needs so that we can provide customized solutions for you.

6 At present, only Chinese and English interfaces are supported; if other languages are introduced, the software can be updated remotely.

7 Door open alert: when the door is open, the test cannot be conducted to protect personnel from being drenched in water.

8 The photos may not match the actual ones, and are for user reference only.

#### Product detail picture:



circuit board

**Tags: Waterproof Test Machine, High Pressure Water Spray Test Equipment, Rain Test Chamber**



**Guangzhou Yuexin Test Equipment Co., Ltd.**



18122303372



mft@yxipx.com



raintestchambers.com

101, No.3, Jiangjunzi Road, Dalong Street, Panyu District, Guangzhou City China