

1000L JIS D 0203 Water Spray Test Equipment With Tempered Glass Window

Our Product Introduction

for more products please visit us on raintestchambers.com

Basic Information

- Place of Origin: Guangdong , China
- Brand Name: YueXin
- Certification: ISO 20653:2013, DIN 40050-9:1993, IEC60529:2013 VW 80000:2017 LV124 K-10, JIS D0203:1994
- Model Number: YX-JISB-1000L
- Minimum Order Quantity: 1pcs
- Price: usd+20000-50000+pcs
- Packaging Details: wooden box package
- Delivery Time: 30-45 days
- Payment Terms: T/T
- Supply Ability: 100+pcs+30



Product Specification

- Title: Water Spray Test Equipment
- Test Function: R1 R2 S1 S2
- Usage Scenarios: Rain / Splash / Water Spray
- Rotating Speed: 1-17 Rounds Per Minute
- Turn Table Diameter: 400mm
- Window Material: Tempered Glass
- Turn Table Load Bearing: 50KG
- Storage Tank Capacity: Approx 50L
- Highlight: 1000L Water Spray Test Equipment, JIS D 0203 Water Spray Test Equipment



More Images



Product Description

1000L JIS D 0203 Water Spray Test Chamber, JIS Standard Waterproof Test Machine

General specification:

Dimension:

External: Approx W 1450×D 1450×H 2100 (mm)

Internal: W 1000×D 1000×H 1000 (mm)

Material:

External: steel plate

Internal: 304 stainless steel

Product description:

The Water Resistance Evaluation Chamber, adhering to JIS specifications, serves as a dedicated apparatus for gauging the waterproof capabilities of products. It meticulously mimics diverse aquatic exposure scenarios to ascertain both the functional performance and longevity of products when subjected to water.

There is a water storage tank inside the equipment and a water level control system. When the water is full, it will prompt, and when it is short of water, it will alarm.

The sample power socket (220V, 10A) is mounted on the right wall of the inner box, which is convenient for the user to do the live test of the sample; and after the sample is powered on, the turntable rotation will be automatically adjusted to forward and reverse rotation to prevent winding⁵.

There is a waterproof lighting inside, which is convenient for users to observe the test situation.

The flow rate is automatically adjusted by an electronic flow sensor, and the flow data will be displayed on the touch screen in real time⁶.

Controller: 7-inch touch screen + PLC, using Yuxin self-developed software, which can be switched to multiple languages⁷.

Test time setting: 0-999min⁸.

Universal casters are mounted on the bottom, which has good load-bearing and easy to move and fix the equipment.

Protection measures: short circuit protection, water shortage alert and door open alert⁹.

Application:

The Japanese Standard Rain Test Chamber is primarily utilized for simulating various rainfall conditions to evaluate the waterproof capabilities, sealing performance, and weather resistance of products. Across industries such as electronics, automotive manufacturing, and aerospace, it aids in testing the reliability of products under humid environments, ensuring their seamless operation across diverse climatic conditions.

Standard data for JIS D0203 R1/R2,S1/S2:

Item	Parameter
Dimension of rain nozzle(R1/R2)	Designed according to standards ¹⁰
Dimension of spray nozzle(S1/S2)	Φ1.2mm
Length of flow pipe(S1/S2)	Approx 500mm
Distance between nozzles(S1/S2)	12.5mm
Number of nozzles	2(R1/R2) 40(S1/S2)
Water pressure at rain or spray nozzle (gauge pressure)	R1:0.01MPa R2:0.03MPa S1:0.1MPa S2:0.3MPa
Water volume flow(minimum)	1.9±5% L/min(R1) 3.2±5% L/min(R2) 24.5±5% L/min(S1) 39.2±5% L/min(S2)
Speed of flow pipe	1-23R/min
Water temperature	Ordinary
Distance between sample and flow pipe	Approx 400mm

Notices:

1 The pictures in this document are for customer reference only, and there may be color differences between the actual model and the pictures.

2 This document only lists some test standards, which does not mean that other test requirements and standards cannot be conducted. Welcome to communicate and discuss with us.

3 One test only at the same time. The next project can be only carried out after the current test is completed. In addition, we can provide multi-functional customized test solutions according to user requirements.

4 Standard load-bearing upper limit of turntable is 50kg, but also can be customized per requirements; a optional turntable of φ200mm/400mm or other sizes is available.

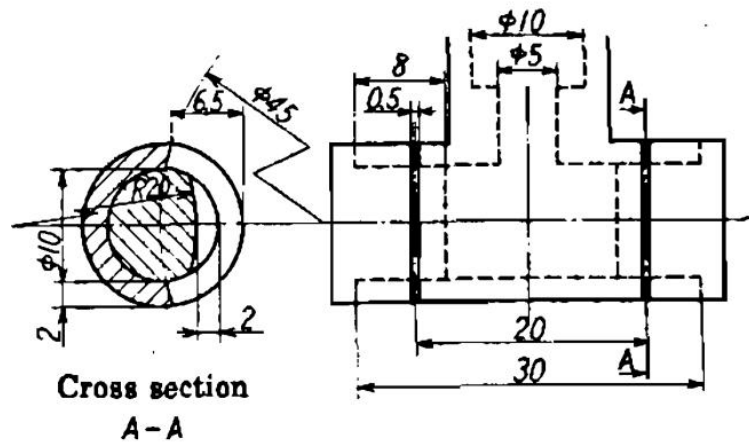
5 Please inform in advance if the voltage(220V) does not match the actual needs so that we can provide customized solutions for you.

6 Use flow sensor to adjust water flow automatically, the flow is set according to the corresponding test options, and does not support custom settings.

7 At present, only Chinese and English interfaces are supported; if other languages are introduced, the software can be updated remotely.

8 It is recommended to set the test time according to the test standard. The water temperature will rise due to long time test which has an impact on the test results.

- 9 Door open alert: when the door is open, the test cannot be conducted to protect personnel from being drenched in water.
 10 Shape and dimension of rain nozzle(R1/R2), as shown below:



- 11 The photos may not match the actual ones, and are for user reference only.

Product detail images:



rotary cylinder
stepping motor

Tags: JIS D 0203 Rain Spray Chamber , JIS D 0203 Water Spray Testing Chamber , JIS Standard Testing Equipment

