



## 500L JIS D 0203 Water Spray Test Chamber , JIS Standard Waterproof Test Machine

Our Product Introduction

### Basic Information

- Place of Origin: Guangdong , China
- Brand Name: YueXin
- Certification: ISO 20653:2013, DIN 40050-9:1993, IEC60529:2013 VW 80000:2017 LV124 K-10, JIS D0203:1994
- Model Number: YX-JISB-500L
- Minimum Order Quantity: 1pcs
- Price: usd+20000-50000+pcs
- Packaging Details: wooden box package
- Delivery Time: 30-45 days
- Payment Terms: T/T
- Supply Ability: 100+pcs+30



### Product Specification

- Title: JIS D 0203 Water Spray Test Chamber
- Window Materia: Tempered Glass
- Usage Scenarios: Rain / Splash / Water Spray
- Turn Table Diameter: 400mm
- Turn Table Load Bearing: 50KG
- Test Function: R1 R2 S1 S2
- Rotating Speed: 1-17 Rounds Per Minute
- Storage Tank Capacity: Approx 50L
- Highlight: 500L Water Spray Test Chamber , JIS D 0203 Waterproof Test Chamber , JIS Standard Waterproof Test Machine



### More Images



for more products please visit us on [raintestchambers.com](http://raintestchambers.com)

## Product Description

### 500L JIS D 0203 Water Spray Test Chamber, JIS Standard Waterproof Test Machine

#### General specification:

##### Dimension:

External: Approx W 1250×D 1250×H 1900 (mm)

Internal: W 800×D 800×H 800 (mm)

##### Material:

External: steel plate

Internal: 304 stainless steel

#### Product description:

The JIS Standard Waterproof Test Chamber is a specialized equipment designed to evaluate the water resistance of products in accordance with Japanese Industrial Standards (JIS). It simulates various waterproof conditions to assess the performance and durability of products under exposure to water.

There is a water storage tank inside the equipment and a water level control system. When the water is full, it will prompt, and when it is short of water, it will alarm.

The sample power socket (220V, 10A) is mounted on the right wall of the inner box, which is convenient for the user to do the live test of the sample; and after the sample is powered on, the turntable rotation will be automatically adjusted to forward and reverse rotation to prevent winding<sup>5</sup>.

There is a waterproof lighting inside, which is convenient for users to observe the test situation.

The flow rate is automatically adjusted by an electronic flow sensor, and the flow data will be displayed on the touch screen in real time<sup>6</sup>.

Controller: 7-inch touch screen + PLC, using Yuexin self-developed software, which can be switched to multiple languages<sup>7</sup>.

Test time setting: 0-999min<sup>8</sup>.

Universal casters are mounted on the bottom, which has good load-bearing and easy to move and fix the equipment.

Protection measures: short circuit protection, water shortage alert and door open alert<sup>9</sup>.

#### Standard data for JIS D0203 R1/R2,S1/S2:

Item	Parameter
Dimension of rain nozzle(R1/R2)	Designed according to standards <sup>10</sup>
Dimension of spray nozzle(S1/S2)	Φ1.2mm
Length of flow pipe(S1/S2)	Approx 500mm
Distance between nozzles(S1/S2)	12.5mm
Number of nozzles	2(R1/R2) 40(S1/S2)
Water pressure at rain or spray nozzle (gauge pressure)	R1:0.01MPa R2:0.03MPa S1:0.1MPa S2:0.3MPa
Water volume flow(minimum)	1.9±5% L/min(R1) 3.2±5% L/min(R2) 24.5±5% L/min(S1) 39.2±5% L/min(S2)
Speed of flow pipe	1-23R/min
Water temperature	Ordinary
Distance between sample and flow pipe	Approx 400mm

#### Remark:

1 The pictures in this document are for customer reference only, and there may be color differences between the actual model and the pictures.

2 This document only lists some test standards, which does not mean that other test requirements and standards cannot be conducted. Welcome to communicate and discuss with us.

3 One test only at the same time. The next project can be only carried out after the current test is completed. In addition, we can provide multi-functional customized test solutions according to user requirements.

4 Standard load-bearing upper limit of turntable is 50kg, but also can be customized per requirements; a optional turntable of φ200mm/400mm or other sizes is available.

5 Please inform in advance if the voltage(220V) does not match the actual needs so that we can provide customized solutions for you.

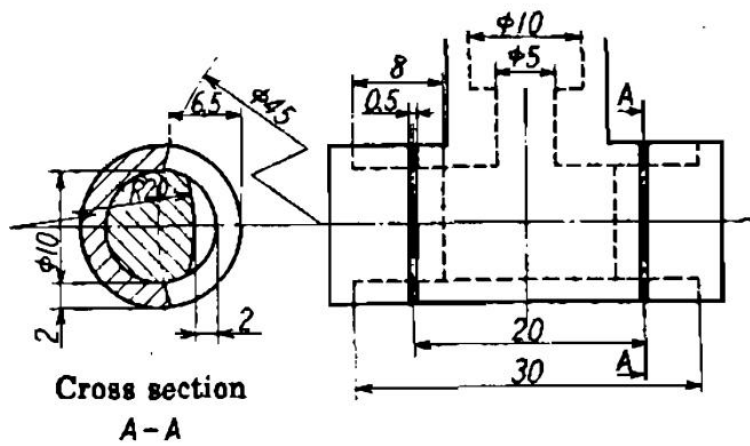
6 Use flow sensor to adjust water flow automatically, the flow is set according to the corresponding test options, and does not support custom settings.

7 At present, only Chinese and English interfaces are supported; if other languages are introduced, the software can be updated remotely.

8 It is recommended to set the test time according to the test standard. The water temperature will rise due to long time test which has an impact on the test results.

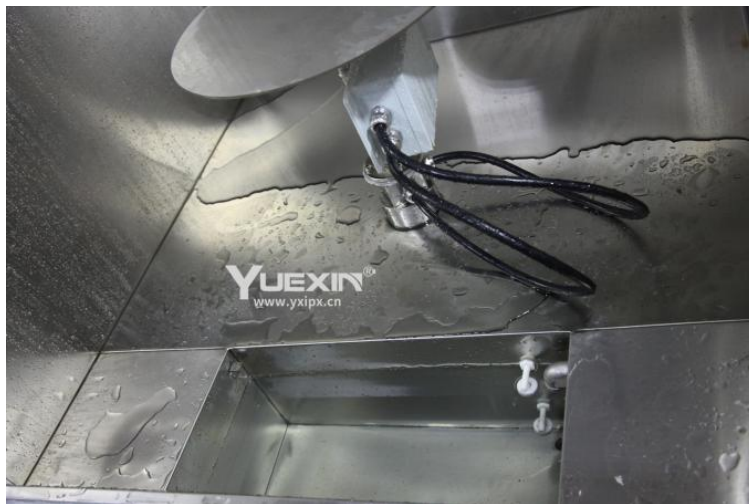
9 Door open alert: when the door is open, the test cannot be conducted to protect personnel from being drenched in water.

10 Shape and dimension of rain nozzle(R1/R2), as shown below:



11 The photos may not match the actual ones, and are for user reference only.

The detail images:



valve

water tank

**Tags:** JIS D 0203 Rain Spray Chamber , JIS D 0203 Water Spray Testing Chamber , JIS Standard Testing Machine



Guangzhou Yuexin Test Equipment Co., Ltd.



18122303372



mft@yxipx.com



raintestchambers.com

101, No.3, Jiangjunzi Road, Dalong Street, Panyu District, Guangzhou City China

