

R400 JIS D 0203 Water Spray Chamber , JIS Standard Rain Spray Chamber

Our Product Introduction

for more products please visit us on raintestchambers.com

Basic Information

- Place of Origin: Guangdong , China
- Brand Name: YueXin
- Certification: ISO 20653:2013, DIN 40050-9:1993, IEC60529:2013 VW 80000:2017 LV124 K-10, JIS D0203:1994
- Model Number: YX-JIS34B-R400
- Minimum Order Quantity: 1pcs
- Price: usd+20000-50000+pcs
- Packaging Details: wooden box package
- Delivery Time: 30-45 days
- Payment Terms: T/T
- Supply Ability: 100+pcs+30



Product Specification

- Test Function: IPX3 IPX4 R1 R2 S1 S2
- Storage Tank Capacity: Approx 50L
- Window Material: Tempered Glass
- Usage Scenarios: Rain、 Splash、 Water Spray
- Turn Table Diameter: 400mm
- Rotating Speed: 1-17 Rounds Per Minute
- Turn Table Load Bearing: 50KG
- Title: JIS D 0203 Rain And Spray Test Chamber , JIS D 0203 Water Spray Test Chamber
- Highlight: **R400 Water Spray Chamber, JIS D 0203 Water Spray Chamber, JIS Standard Rain Spray Chamber**



More Images



Product Description

R400 JIS D 0203 Water Spray Test Chamber, JIS Standard Rain Spray Chamber

General specification:

Dimension:

Outer: Approx W 1450×D 1450×H 2100 (mm)

Inner: W 900×D 900×H 900 (mm)

Material:

External: steel plate

Internal: 304 stainless steel

Product description:

Designed conformingly to JIS norms, the Waterproof Testing Facility represents a sophisticated tool for evaluating the extent to which products can withstand water ingress. By replicating a range of waterproofing conditions, it effectively gauges the product's resilience and operational efficacy in aqueous environments.

There is a water storage tank inside the equipment and a water level control system. When the water is full, it will prompt, and when it is short of water, it will alarm.

The sample power socket (220V, 10A) is mounted on the right wall of the inner box, which is convenient for the user to do the live test of the sample; and after the sample is powered on, the turntable rotation will be automatically adjusted to forward and reverse rotation to prevent winding⁵.

There is a waterproof lighting inside, which is convenient for users to observe the test situation.

The flow rate is automatically adjusted by an electronic flow sensor, and the flow data will be displayed on the touch screen in real time⁶.

Controller: 7-inch touch screen + PLC, using Yuexin self-developed software, which can be switched to multiple languages⁷.

Test time setting: 0-999min⁸.

Universal casters are mounted on the bottom, which has good load-bearing and easy to move and fix the equipment.

Protection measures: short circuit protection, water shortage alert and door open alert⁹.

Standard data for IPX3/4:

Item	Parameter
Radius of swivel tube ¹⁰	R400mm
Diameter of swivel tube	1200mm
Internal diameter of swivel tube	15mm
Internal diameter of nozzle	0.4mm
Number of nozzles of swivel tube	See remark ¹¹
Distance between nozzles	50mm
Speed of rotation of the swivel tube	60 degree/s
Swing pipe angle	IPX3:120°; IPX4:350°
Water volume flow	IPX3(L/min): 1.8; IPX4(L/min): 2.6

Standard data for JIS D0203 R1/R2,S1/S2:

Item	Parameter
Dimension of rain nozzle(R1/R2)	Designed according to standards ¹²
Dimension of spray nozzle(S1/S2)	Φ1.2mm
Length of flow pipe(S1/S2)	Approx 500mm
Distance between nozzles(S1/S2)	12.5mm
Number of nozzles	2(R1/R2) 40(S1/S2)
Water pressure at rain or spray nozzle (gauge pressure)	R1:0.01MPa R2:0.03MPa S1:0.1MPa S2:0.3MPa
Water volume flow(minimum)	1.9±5% L/min(R1) 3.2±5% L/min(R2) 24.5±5% L/min(S1) 39.2±5% L/min(S2)
Speed of flow pipe	1-23R/min
Water temperature	Ordinary
Distance between sample and flow pipe	Approx 400mm

Working scene:

Primarily employed for simulating a wide array of rainfall patterns, the Japanese Standard Rain Test Chamber evaluates products' resistance to water ingress, sealing efficiency, and weather durability. It supports industries like electronics, automotive production, and aerospace in validating products' reliability under humid conditions, thereby ensuring their smooth operation across diverse climatic settings.

Remark:

1 The pictures in this document are for customer reference only, and there may be color differences between the actual model and the pictures.

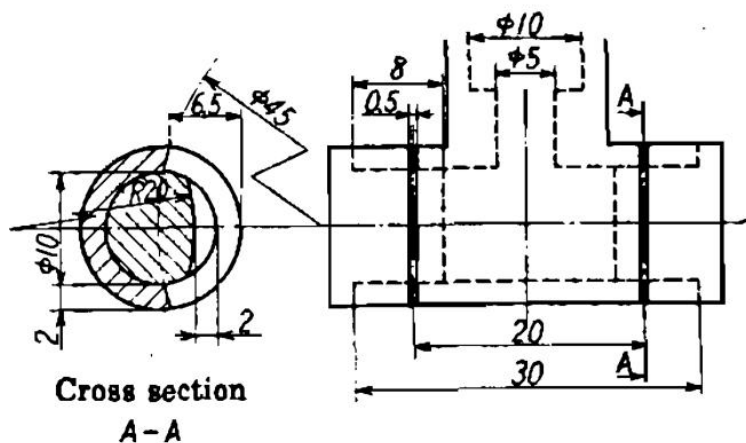
- 2 This document only lists some test standards, which does not mean that other test requirements and standards cannot be conducted. Welcome to communicate and discuss with us.
- 3 One test only at the same time. The next project can be only carried out after the current test is completed. In addition, we can provide multi-functional customized test solutions according to user requirements.
- 4 Standard load-bearing upper limit of turntable is 50kg, but also can be customized per requirements ; a optional turntable of $\phi 200\text{mm}/400\text{mm}$ or other sizes is available.
- 5 Please inform in advance if the voltage(220V) does not match the actual needs so that we can provide customized solutions for you.
- 6 Use flow sensor to adjust water flow automatically, the flow is set according to the corresponding test options, and does not support custom settings.
- 7 At present, only Chinese and English interfaces are supported; if other languages are introduced, the software can be updated remotely.
- 8 It is recommended to set the test time according to the test standard. The water temperature will rise due to long time test which has an impact on the test results.
- 9 Door open alert: when the door is open, the test cannot be conducted to protect personnel from being drenched in water.
- 10 Multiple specifications of pendulum tubes can be provided, please confirm clearly before placing an order; if other specifications are added after purchase, the equipment needs to be returned to the factory to replace hardware and programs.
- 11 The specifications of swing pipe for IPX3/4 rain test, as shown in the figure below:

Table 9 – Total water flow rate q_v under IPX3 and IPX4 test conditions –
Mean flow rate per hole $q_{v1} = 0,07 \text{ l/min}$

Tube radius R mm	Degree IPX3		Degree IPX4	
	Number of open holes $N^{(1)}$	Total water flow q_v l/min	Number of open holes $N^{(1)}$	Total water flow q_v l/min
200	8	0,56	12	0,84
400	16	1,1	25	1,8
600	25	1,8	37	2,6
800	33	2,3	50	3,5
1 000	41	2,9	62	4,3
1 200	50	3,5	75	5,3
1 400	58	4,1	87	6,1
1 600	67	4,7	100	7,0

1) Depending on the actual arrangement of the hole centres at the specified distance, the number of open holes N may be increased by 1.

- 12 Shape and dimension of rain nozzle($R1/R2$), as shown below:



- 13 The photos may not match the actual ones, and are for user reference only.

The detail images:





pressure sensor

waterway

Tags: JIS D 0203 Rain Spray Chamber , JIS D 0203 Water Spray Testing Chamber , JIS Standard Testing Machine



Guangzhou Yuexin Test Equipment Co., Ltd.



18122303372



mft@yxipx.com



raintestchambers.com

101, No.3, Jiangjunzi Road, Dalong Street, Panyu District, Guangzhou City China