

500L Ice Water Impact Test Equipment , Reliable Ice Water Splash Test Chamber

Our Product Introduction

for more products please visit us on raintestchambers.com

Basic Information

- Place of Origin: Guangdong , China
- Brand Name: YueXin
- Certification: ISO16750、 VW80000 2009-10
- Model Number: YX-BSJM-500L
- Minimum Order Quantity: 1 pcs
- Price: usd+20000-50000+pcs
- Packaging Details: wooden box package
- Delivery Time: 30-45 days
- Payment Terms: T/T
- Supply Ability: 100+pcs+30



Product Specification

- Immersion Tank: About 200L
- Commodity Description: Ice Water Immersion Test Chamber , Ice Water Submersion Test Machine
- Power: 25.0KW
- Power Supply: 380V/50Hz
- Lifting Blue Load: 50KG
- Spray Flow: (3~4) L/3S
- Simulated Environment: Low Temperature, Shock
- Application Fields: Electronic Appliances, Automotive Industry, Aerospace...
- Highlight: 500L Impact Test Equipment, Ice Water Impact Test Equipment, Ice Water Splash Test Chamber



More Images



Product Description

500L Ice Water Impact Test Chamber, Reliable Ice Water Splash Test Chamber

Applicable scene:

Across diverse sectors like electronics, automotive, aerospace, and medical equipment, the ice-water shock chamber finds extensive application. Specifically in electronics, it serves to validate the resilience of circuit boards, sensors, and associated components amidst frigid temperatures. Similarly, in the automotive sector, it meticulously evaluates the endurance of vehicle components under harsh weather conditions, ultimately safeguarding the seamless functioning of products in challenging environments.

Product characteristics:

The ice water shock chamber stands as a unique apparatus designed to scrutinize the performance and durability of materials, components, or devices amidst drastic temperature fluctuations and the impact of icy waters. By swiftly chilling and dispensing icy water, it mimics unforgiving conditions, thereby assessing the products' reliability and resilience against impacts.

1. It is suitable for the ice water splash test and ice water immersion test of the product.
2. The inner box is all made of SUS316# stainless steel plate to ensure that it will not rust for a long time.
3. Thermal insulation material: high-density glass fiber cotton to ensure thermal insulation performance and maintain a balanced and stable temperature in the room.
4. The high-temperature system adopts a long-axis fan motor and high and low temperature resistant 316 stainless steel multi-wing impellers to achieve strong convection and vertical diffusion circulation, so that the temperature in the laboratory is uniform and stable.
5. Double-layer high-temperature-resistant high-tension sealing strips are used between the door and the box of the equipment to ensure the airtightness of the test area.
6. The test hole (diameter 100mm) is installed on the left side of the device, which can be used for external test power lines or signal lines.
7. Using 7-inch LCD touch screen control + PLC control can control the temperature in the tank, water tank temperature, flow, water pump and test time, etc.; the flow and temperature are directly displayed on the touch screen, automatic constant current and constant temperature.
8. Ice water splash test: the nozzle is fixed on the right side of the test chamber; the spray distance is adjusted by moving the sample.
9. The flow sensor is used to control the flow of the ice water splash test. The signal of the flow sensor is fed back to the PLC, and the automatic constant flow is controlled by PID, and the flow is directly displayed on the touch screen.
10. Ice water immersion test: This test is not carried out at the same time as the splash test, and meets the requirements of 5.4.3 in GB/T28046.4-2011. The cylinder drives the chain to move up and down, and can be directly transferred from the test box to the water tank. , The immersion time can be set, the setting range is 1~5min, the cycle number setting range: 1~999 times, the temperature recovery time in the water tank is 30min.
11. The ice water temperature control device adopts the water cycle refrigeration method to ensure the water temperature and the uniformity of the mixed water.
12. The equipment has the function of automatic cleaning of pipelines and inner boxes.

Technical parameter:

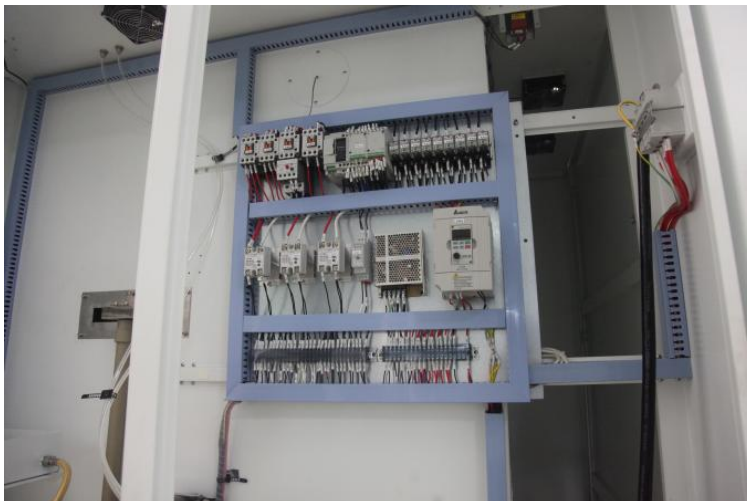
High temperature inner box size	L 800* D 800* H 800mm
External dimensions	L 1300* D 1700* H 2050mm
Basket size	L 300* D 300* H 300mm
Immersion tank size	L 600* D 600* H 600mm
Number of orifices	1 slot nozzle
Nozzle position	Right side of inner box
Nozzle to sample distance	325±25mm (manually adjustable)
Blue size	Length 500*width 500*height 500mm
Lifting blue load	50KG
Immersion tank	About 200L (circulating water stirring, bottom slope, easy to clean and drain)
High temperature range	RT+10°C 150°C (touch screen setting)
Heating rate	RT+10 150 ≤45min
Water temperature control range	(0 +4) (touch screen setting)
Cooling rate	25 2 ≤60min
Spray flow	(3~4) L/3S (touch screen setting)
Test liquid medium	Deionized water or +5%NaCl+3% Arizona fine dust
Injection time per cycle (30min)	3S, interval time: interval time: 29m57s (touch screen setting)
Number of cycles	100 times (touch screen setting)
Lift time	≤20S (touch screen setting)
Time per immersion	1 99 min (touch screen setting)
Immersion times	1 99 (touch screen setting)
Temperature uniformity of ice water in immersion tank	±0.5
Automatic cleaning function	After the test is completed, the pipeline and inner box are automatically cleaned (with a hand-held spray gun)
Water temperature cooling method	Pipeline circulating water flow cooling
Dust mixing method	Pipeline circulating water mixing
Sprinkler nozzle	Detachable slit nozzle (nozzle can be disassembled for cleaning)

How to use the test liquid	Recycle
Sample stage	Liftable
Device power	380V/50Hz, three-phase five-wire system
Equipment power	25.0KW
Security features	Leakage protection, water shortage protection, short circuit protection, phase sequence protection, thermal overload protection

Note:

Due to the technical upgrade, some technical parameters do not conform to the actual machine, please forgive us without further notice.

The detail images of product:



circuit board

Tags: Ice Water Shock Test Chamber , Cold Splash Testing Equipment , Ice Water Immersion Impact Test Machine

YUEXIN® Guangzhou Yuexin Test Equipment Co., Ltd.

☎ 18122303372 ✉ mft@yxipx.com 🌐 raintestchambers.com

101, No.3, Jiangjunzi Road, Dalong Street, Panyu District, Guangzhou City China