

600mm Drip Test Equipment , Dripping Rain Test Chamber IPX1 IPX2

Our Product Introduction

Basic Information

- Place of Origin: Guangdong , China
- Brand Name: YueXin
- Certification: ISO 20653:2013 , DIN 40050-9:1993 , IEC60529:2013 VW80000:2017 LV124 K-10
- Model Number: YX-IPX12B-600
- Minimum Order Quantity: 1pcs
- Price: usd+20000-50000+pcs
- Packaging Details: wooden box package
- Delivery Time: 30-45 days
- Payment Terms: T/T
- Supply Ability: 100+pcs+30



Product Specification

- Product Name: Environmental Testing Equipment, Humidity Temperature Test Chamber
- Drip Area: 600×600mm
- Drip Distance: 200mm
- Turntable Tilt: 0° Or 15°
- IP Grade: IPX12
- Turn Table Diameter: 600mm
- Turn Table Load Bearing: 30KG
- Distance Between Nozzles: 20mm
- Highlight: 600mm Drip Test Equipment, Dripping Rain Test Chamber



for more products please visit us on raintestchambers.com

Product Description

600 mm Portable Drip Test Machine , Dripping Rain Test Chamber for IPX1 IPX2

General specifications:

Dimension	External: Approx W 1250×D 1020×H 1750 (mm) Internal: W 800×D 800×H 1000 (mm)
Material	Exterior: steel plate Interior: 304 stainless steel

Applicable scene:

We caters to a broad spectrum of industries – from plastics and rubbers to paints, coatings, printing inks, paper, pharmaceuticals, food & beverage, cosmetics, textiles, automotive sectors, packaging, construction, and electrical/electronics. It delivers crucial testing data that is essential for advancing scientific knowledge, driving product development, and ensuring rigorous quality control practices.

Description:

As opposed to the standing and wall-mounted alternatives, the box-format rain test cabinet shines in its ease of transportation, its promotion of water recycling for experimental purposes, its commitment to environmental protection, and its adaptability for waterproof evaluation of smaller apparatus.

The drip tank is made of stainless steel, with 0.4mm needle nozzles evenly distributed, and the water level is invisible. There is a water storage tank inside the equipment and a water level control system. When the water is full, it will prompt, and when it is short of water, it will alarm.

The sample power socket (220V, 10A) is mounted on the right wall of the inner box, which is convenient for the user to do the live test of the sample; and after the sample is powered on, the turntable rotation will be automatically adjusted to forward and reverse rotation to prevent winding⁵.

There is a waterproof lighting inside, which is convenient for users to observe the test situation.

Controller: 7-inch touch screen + PLC, using Yuexin self-developed software, which can be switched to multiple language⁶.

Test time setting: 0-999min⁷.

Universal casters are mounted on the bottom, which has good load-bearing and easy to move and fix the equipment.

Protection measures: short circuit protection, water shortage alert.

Front window for a clear view of the internal test.

Blue and white colours are used in the shell, which is in line with the theme of waterproof test.

The standard version uses a glass flow meter to regulate the flow rate, and can be upgraded to use a sensor to regulate the flow rate, and the data is displayed on the touch screen.

Three-stage filtration system: mesh cover plate can prevent spare parts from entering the water storage tank, built-in filter plate can prevent paper screws and so on from entering the pump, high-precision filter can adsorb tiny impurities in the water to prevent the nozzle from clogging.

Drip plate is fixed, by lifting the height of the turntable to achieve the adjustment of the drip distance, turntable lifting range 0-500mm.

The main technical parameters :

Item	Specification
Drip area	600×600mm
Diameter of nozzles	0.4mm
Distance between nozzles	20mm
Flow control ⁸	Manual adjustment with flow meter
Water flow(IPX1) ⁹	0.36-0.54 L/min
Water flow(IPX2)	1.08-1.26 L/min
Power	1.0kW
Drip distance ¹⁰	200mm
Power supply	220V/50HZ
Flow meter range	0-2.0 L

Notes:

1 The pictures in this document are for customer reference only, and there may be color differences between the actual model and the pictures.

2 This document only lists some test standards, which does not mean that other test requirements and standards cannot be conducted. Welcome to communicate and discuss with us.

3 One test only at the same time. The next project can be only carried out after the current test is completed. In addition, we can provide multi-functional customized test solutions according to user requirements.

4 Standard load-bearing upper limit of turntable is 30kg, but also can be customized per requirements.

5 Please inform in advance if the voltage(220V) does not match the actual needs so that we can provide customized solutions for you.

6 At present, only Chinese and English interfaces are supported; if other languages are introduced, the software can be updated remotely.

7 It is recommended to set the test time according to the test standard. The water temperature will rise due to long time test which has an impact on the test results.

8 The standard model is adjusted by a flowmeter, and the upper surface of the float is aligned with the scale to read the data; if you need to export the test data, you can choose a flow sensor.

9 The data is calculated based on the dripping area, $IPX1: 0.6 \times 0.6 \times (0.001 - 0.0015) = 0.00036 - 0.00054 m^3/min$ (that is 0.36-0.54L/min). When reading the flowmeter, the second digit after the decimal point is the estimated reading data, not accurate data; if the user is concerned about the accuracy of the data, a flow sensor can be selected through negotiation.

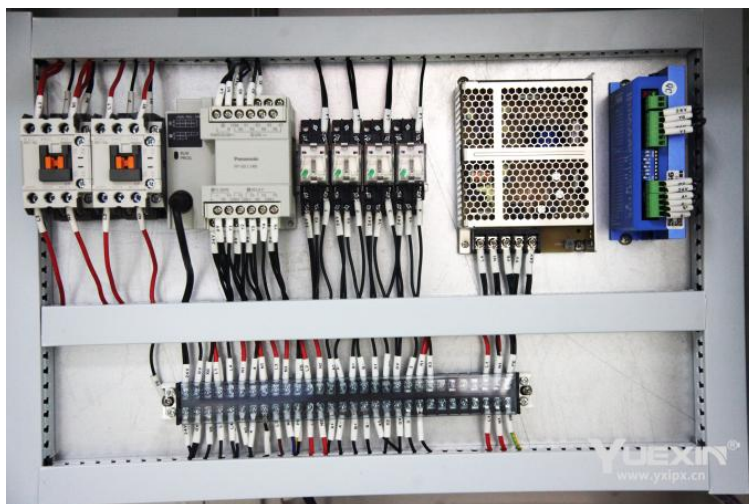
Second characteristic numeral	Test means	Water flow rate	Duration of test	Test conditions, see
0	No test required	—	—	—
1	Drip box Figure 3 Enclosure on turntable	$1^{+0.5}_{-0}$ mm/min	10 min	14.2.1
2	Drip box Figure 3 Enclosure in 4 fixed positions of 15° tilt	$3^{+0.5}_{-0}$ mm/min	2.5 min for each position of tilt	14.2.2

10 200mm is the distance from the nozzle to the sample specified in the standard, and the user needs to adjust the height of the turntable to meet the distance requirement.

11 The user needs to prepare an air compressor in advance (recommended gas storage capacity > 40L). If you need us to buy it on your behalf, you need to explain in advance.

12 The photos may not match the actual ones, and are for user reference only.

The product detail image:



circuit board

Tags: Dripping Testing Machine, Water Drip Test Chamber, Dripping Environmental Chamber

YUEXIN® Guangzhou Yuexin Test Equipment Co., Ltd.

☎ 18122303372 ✉ mft@yxipx.com 🌐 raintestchambers.com

101, No.3, Jiangjunzi Road, Dalong Street, Panyu District, Guangzhou City China