

JIS Standard R800 Rain Test Machine , Compliant JIS D 0203 Rain Spray Chamber

Our Product Introduction

for more products please visit us on raintestchambers.com

Basic Information

- Place of Origin: Guangdong , China
- Brand Name: YueXin
- Certification: ISO 20653:2013, DIN 40050-9:1993, IEC60529:2013 VW 80000:2017 LV124 K-10, JIS D0203:1994
- Model Number: YX-JIS34C-R800
- Minimum Order Quantity: 1pcs
- Price: usd+20000-50000+pcs
- Packaging Details: wooden box package
- Delivery Time: 30-45 days
- Payment Terms: T/T
- Supply Ability: 100+pcs+30



Product Specification

- Usage Scenarios: Rain、Splash、 Water Spray
- Turn Table Diameter: 800mm
- Test Function: IPX3 IPX4 IPX4K R1 R2 S1 S2
- Rotating Speed: 1-17 Rounds Per Minute
- Water Temperature Range: 15-70
- Turn Table Load Bearing: 50KG
- Storage Tank Capacity: Approx 300L
- Product Name: JIS D0203 Rain And Spray Test Chamber , JIS D0203 Water Spray Test Chamber
- Highlight: JIS Standard Rain Test Machine, R800 Rain Test Machine, JIS D 0203 Rain Spray Chamber



More Images



Product Description

JIS Standard R800 Rain Test Machine, Compliant JIS D 0203 Rain Spray Chamber

Standard features:

The Waterproof Testing Chamber, tailored to JIS specifications, is a precision tool devised for examining the water resistance capabilities of products. By creating realistic waterproofing conditions, it facilitates the comprehensive evaluation of a product's durability and operational stability under water exposure.

The sample power socket (220V, 10A) is mounted under the side of the chassis, which is convenient for the user to do the live test of the sample; and after the sample is powered on, the turntable rotation will be automatically adjusted to forward and reverse rotation to prevent winding ⁶.

The flow rate is automatically adjusted by an electronic flow sensor, and the flow data will be displayed on the touch screen in real time⁷.

Controller: 7-inch touch screen + PLC, using Yuexin self-developed software, which can be switched to multiple languages⁸.

Test time setting: 0-999min⁹.

The equipment is equipped with a filter, which can effectively remove impurities (regularly replace the filter element).

Casters are mounted at the bottom, and can be adjusted to fix the chassis according to the flatness of the ground.

Usage:

The Japanese Standard Rainfall Simulation Chamber is primarily harnessed to mimic diverse rainfall conditions, enabling the evaluation of products' waterproofing strengths, sealing effectiveness, and weather tolerance. It aids industries spanning electronics, automotive engineering, and aerospace in verifying products' reliability under humid circumstances, thereby guaranteeing their seamless functionality across a range of climatic variations.

Standard data for IPX3/4:

Item	Parameter
Radius of swivel tube ¹⁰	R800mm
Diameter of swivel tube	1000mm/2000mm
Internal diameter of swivel tube	15mm
Internal diameter of nozzle	0.4mm
Number of nozzles of swivel tube	See remark ¹¹
Distance between nozzles	50mm
Speed of rotation of the swivel tube	60 degree/s
Swing pipe angle	IPX3:120°; IPX4:350°
Water volume flow	IPX3(L/min): 2.9; IPX4(L/min): 4.3

Standard data for JIS D0203 R1/R2,S1/S2:

Item	Parameter
Dimension of rain nozzle(R1/R2)	Designed according to standards ¹²
Dimension of spray nozzle(S1/S2)	Φ1.2mm
Length of flow pipe(S1/S2)	Approx 500mm
Distance between nozzles(S1/S2)	12.5mm
Number of nozzles	2(R1/R2) 40(S1/S2)
Water pressure at rain or spray nozzle (gauge pressure)	R1:0.01MPa R2:0.03MPa S1:0.1MPa S2:0.3MPa
Water volume flow(minimum)	1.9±5% L/min(R1) 3.2±5% L/min(R2) 24.5±5% L/min(S1) 39.2±5% L/min(S2)
Speed of flow pipe	1-23R/min
Water temperature	Ordinary
Distance between sample and flow pipe	Approx 400mm

Remark:

1 The pictures in this document are for customer reference only, and there may be color differences between the actual model and the pictures.

2 This document only lists some test standards, which does not mean that other test requirements and standards cannot be conducted. Welcome to communicate and discuss with us.

3 One test only at the same time. The next project can be only carried out after the current test is completed. In addition, we can provide multi-functional customized test solutions according to user requirements.

4 Standard load-bearing upper limit of turntable is 50kg, but also can be customized per requirements ; a optional turntable of φ200mm/400mm/600mm or other sizes is available.

5 Please inform in advance if the voltage(220V) does not match the actual needs so that we can provide customized solutions for you.

6 Use flow sensor to adjust water flow automatically, the flow is set according to the corresponding test options, and does not support custom settings.

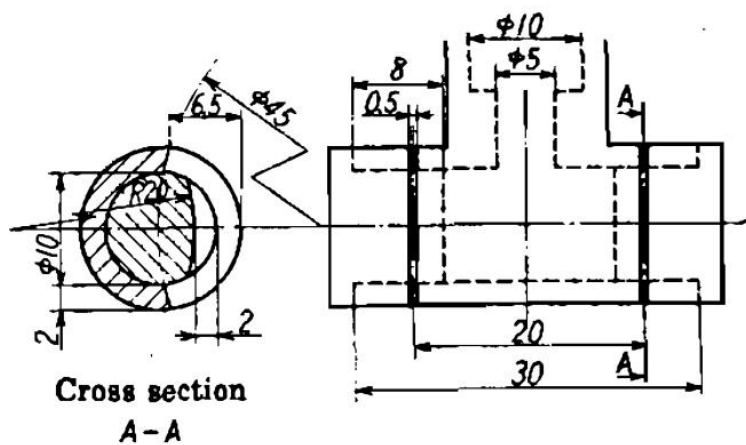
- 7 At present, only Chinese and English interfaces are supported; if other languages are introduced, the software can be updated remotely.
- 8 It is recommended to set the test time according to the test standard. The water temperature will rise due to long time test which has an impact on the test results.
- 9 Multiple specifications of pendulum tubes can be provided, please confirm clearly before placing an order; if other specifications are added after purchase, the equipment needs to be returned to the factory to replace hardware and programs.
- 10 The specifications of swing pipe for IPX3/4 rain test, as shown in the figure below:

Table 9 – Total water flow rate q_v under IPX3 and IPX4 test conditions –
Mean flow rate per hole $q_{v1} = 0,07$ l/min

Tube radius R mm	Degree IPX3		Degree IPX4	
	Number of open holes $N^{1)}$	Total water flow q_v l/min	Number of open holes $N^{1)}$	Total water flow q_v l/min
200	8	0,56	12	0,84
400	16	1,1	25	1,8
600	25	1,8	37	2,6
800	33	2,3	50	3,5
1 000	41	2,9	62	4,3
1 200	50	3,5	75	5,3
1 400	58	4,1	87	6,1
1 600	67	4,7	100	7,0

1) Depending on the actual arrangement of the hole centres at the specified distance, the number of open holes N may be increased by 1.

- 11 Shape and dimension of rain nozzle(R1/R2),as shown below:



- 12 The photos may not match the actual ones, and are for user reference only.

Product detail image:



rotary cylinder

Tags: JIS D 0203 Rain Spray Chamber , JIS D 0203 Water Spray Testing Chamber , JIS Rain and Spray Test Chamber



18122303372



mft@yxipx.com



raintestchambers.com

101, No.3, Jiangjunzi Road, Dalong Street, Panyu District, Guangzhou City China